

DESING OF GSM BLOCKING SYSTEM



ENES MERT ZOR

REFIKCAN KARTUFAN

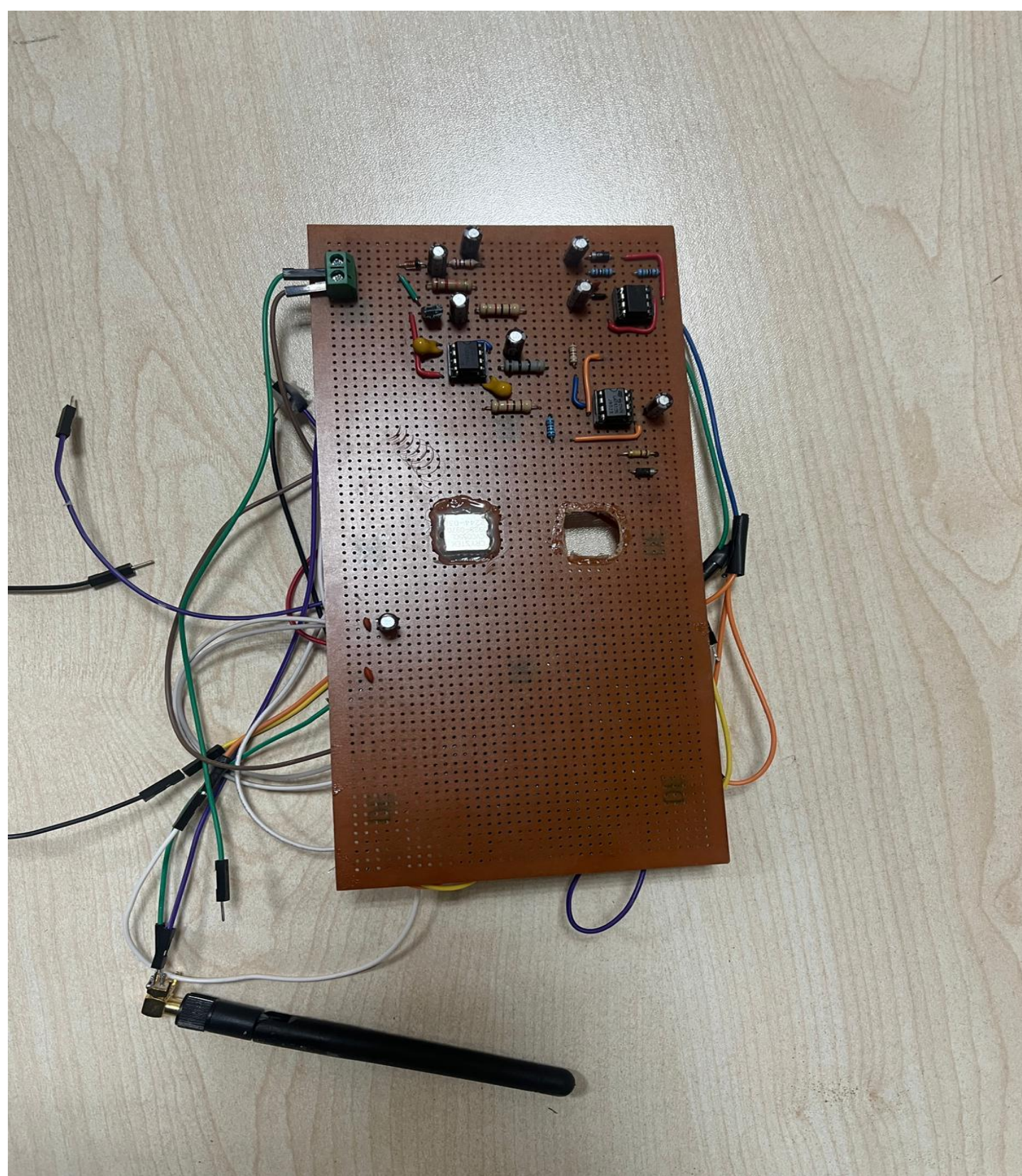
YUSUF YILMAZ

Supervisor Asst. Prof. Dr. SERKAN ÖZBAY

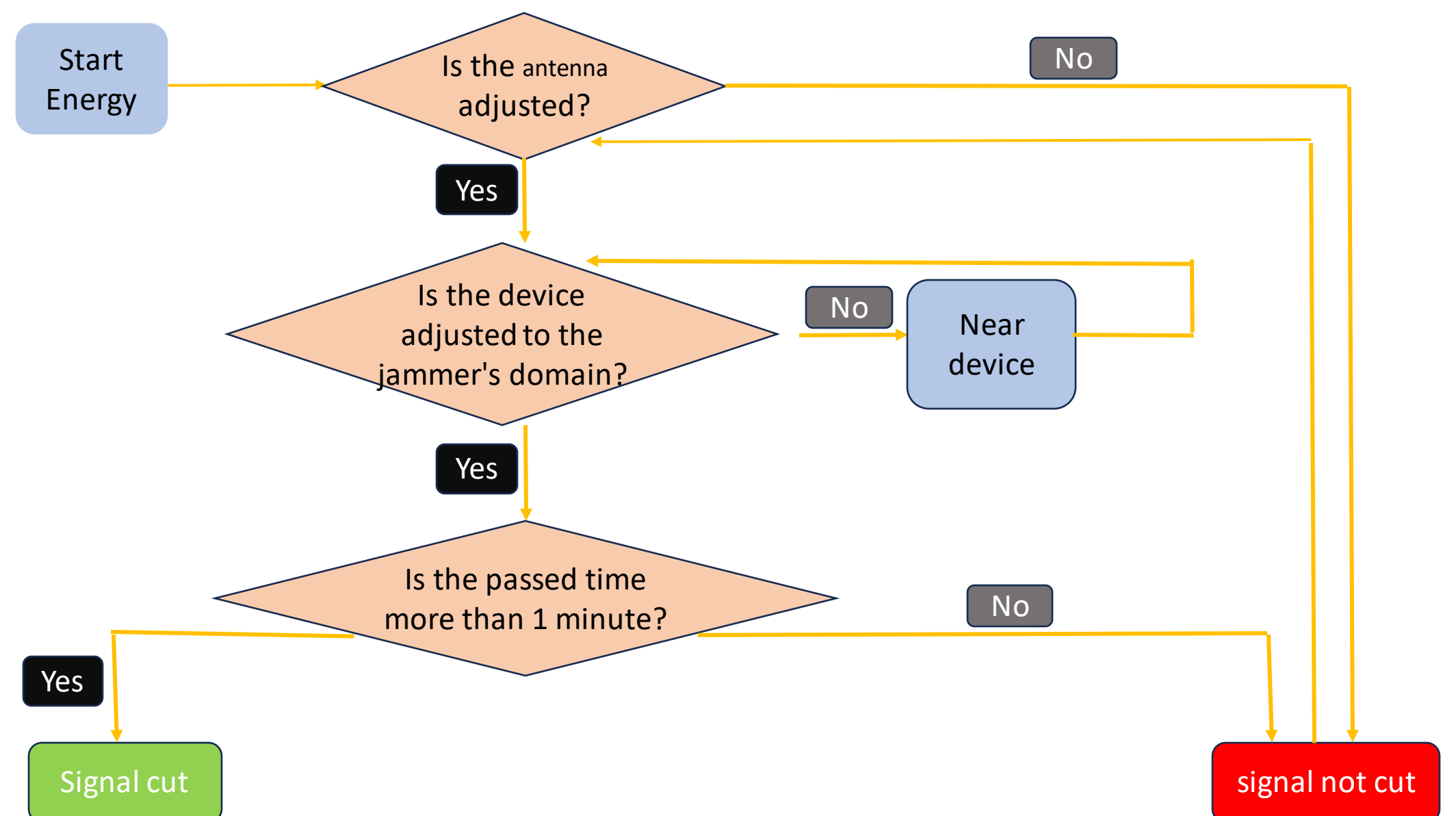
Department of Electrical and Electronics Engineering, University of Gaziantep, Turkey.

Abstract

GSM blocking system is a device used to distort the communication environment in a transceiver system. They produce a strong signal from the same channel as the broadcast they will distort. In this way, they make it impossible for the device that will receive the broadcast to analyze and process the incoming frequency, causing the receiving device to be out of service.



FLOWCHART



Main Components

Copper Plate and Cables , Battery, Antenna, VCO, Power Amplifier and Regulator

GSM BLOCKING SYSTEM

If-section, RF-section is the circuit formed by connecting the antenna and the battery. It disables the phone's network in any location where the phone's use is not desired, depending on the operating range of the antenna, the power of the amplifier and other factors. Finally, a few minutes after the system is powered on, it is observed that the phone has no network.

Conclusion

Overall, the application of a GSM blocking system stands as a strong and effective solution to reduce incompetent mobile communication within designated areas, ensuring enhanced security and control over sensitive environments.

References

1. Rick Hartley, RF / Microwave PC Board Design and Layout, Avionics Systems.
2. John Scourias , Overview of the Global System for Mobile Communications , University of Waterloo.
3. Siwiak, K., Radio-wave propagation and Antennas for personal communication.